

TRANSPORTATION ELECTRIFICATION IN THE SOUTHEAST

North Carolina

North Carolina Electric Vehicle Indicators through December 2022



EMPLOYMENT

#3 in the Southeast per capita

- 10,447 jobs
- 386% growth in 2022



INVESTMENT

#4 in the Southeast per capita

- \$7.8 billion
- 484% growth in 2022



SALES

#3 in the Southeast in market share

- 55,669 cumulative sales
- 51% growth in 2022
- 6.2% of market share in Q4 2022



CHARGING DEPLOYMENT

#3 in the Southeast per capita

- Fast Chargers: 910 ports
- Level 2: 2,554 ports
- 31% growth in total ports in 2022



UTILITY INVESTMENT

- \$24.7 million
- 2% growth in 2022.



PUBLIC FUNDING

#3 in the Southeast per capita

- \$325.7 million approved funding
- \$31.73 public funding per capita

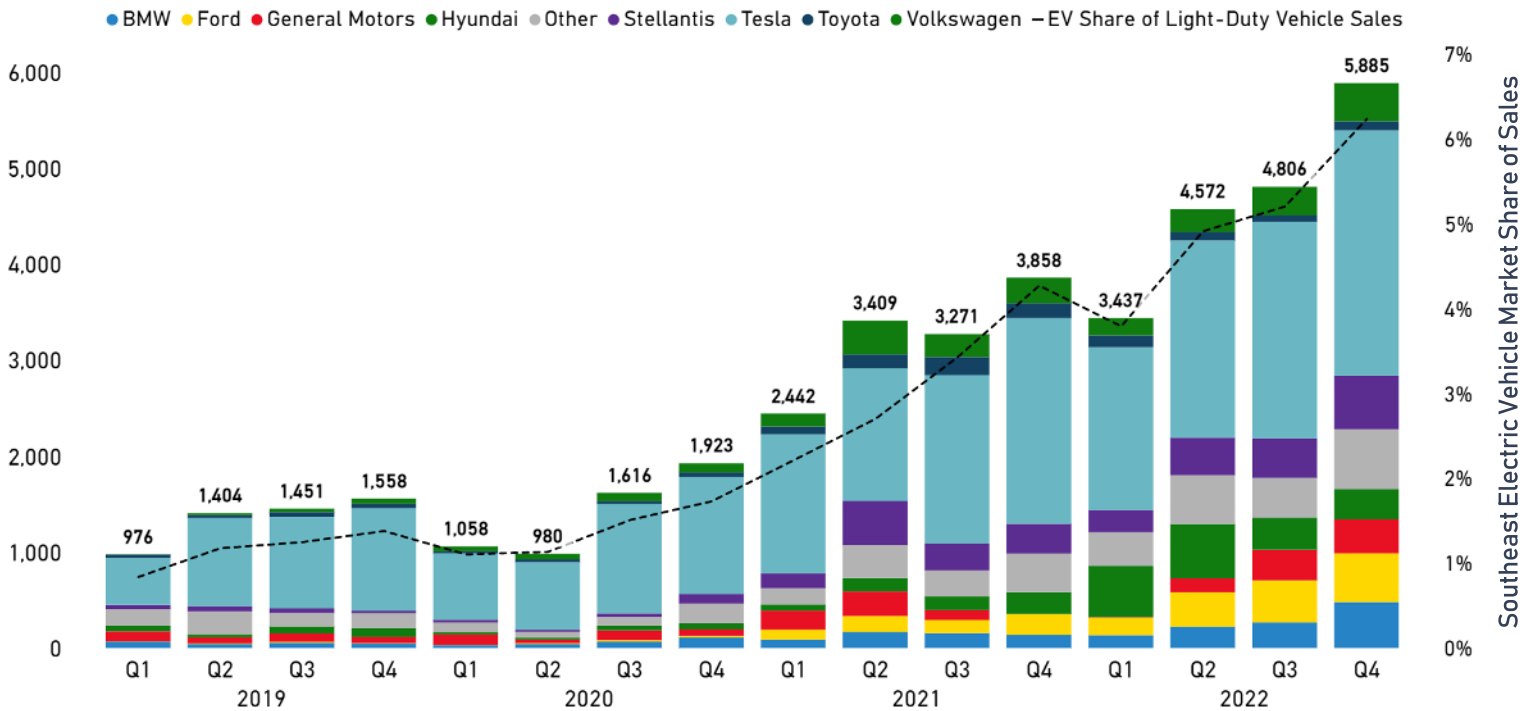
All measures include medium- and heavy-duty EVs, except for sales, which refer exclusively to passenger EVs. EV includes both battery EVs (BEV) and Plug-in Hybrid EVs (PHEV). Employment and Investment refer to announced EV manufacturing facilities including EV charging, EV assembly, battery manufacturing, and battery recycling facilities. Utility refers to investor-owned utilities only. Total is cumulative unless stated. Data is through December 2022 and growth is taken from January 1 to December 31, 2022. To understand EV Sales and charging deployment in a national context, please [read our report](#). Source: Atlas EV Hub

Highlights from July 2022 through December 2022

- Governor Roy Cooper signed Executive Order 271, initiating Advanced Clean Trucks rulemaking to expand the state's medium and heavy-duty EV markets, focusing on economic development, public health, and equity.
- In August 2022, Charlotte, North Carolina, passed a unified development ordinance that includes an EV-Ready code.
- Duke Energy launched its Charger Prep Credit Program to financially support customers installing residential, workplace, and public chargers.

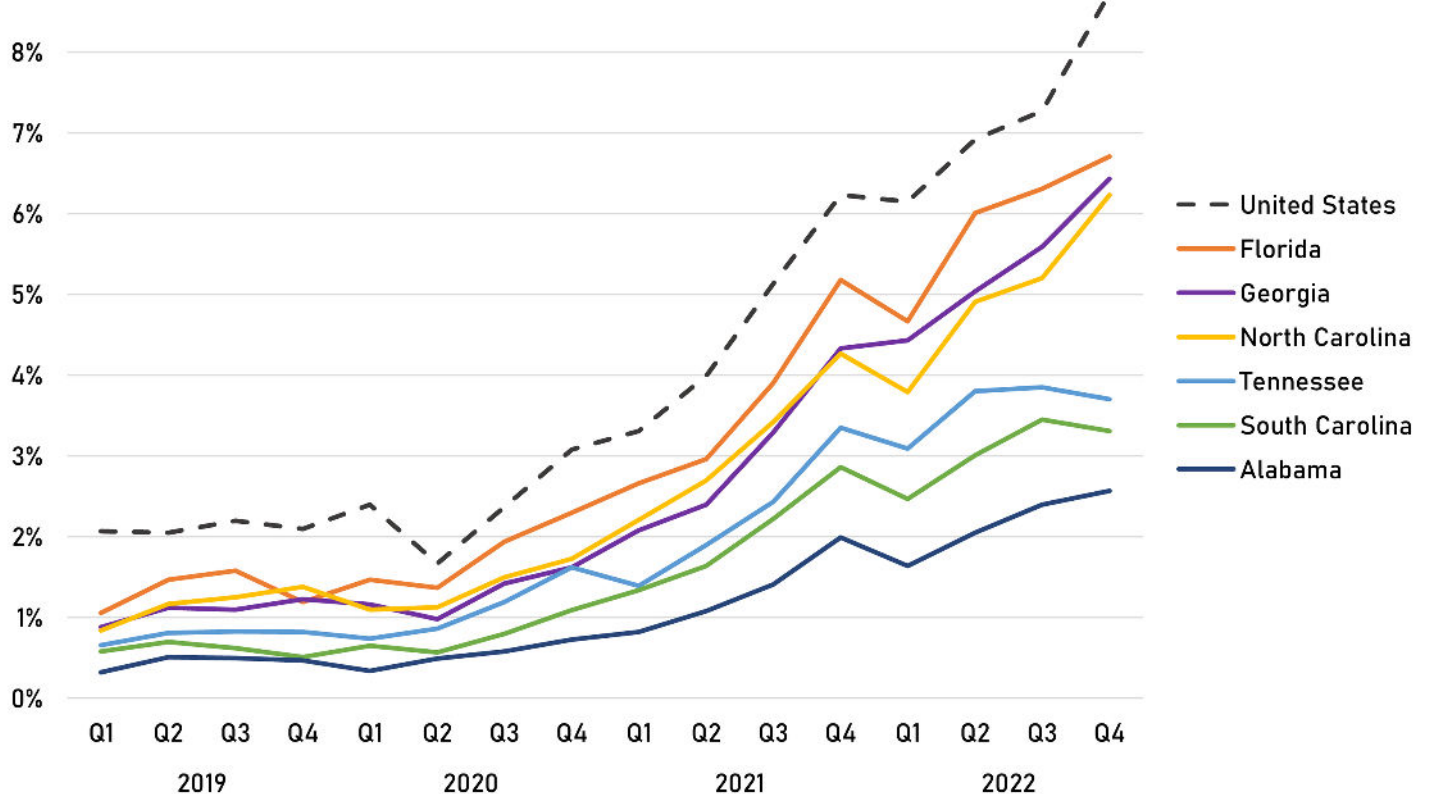


North Carolina EV Sales and Market Share of Sales



Source: Atlas EV Hub

EV Light-Duty Sales Market Share



Source: Atlas EV Hub

