

TRANSPORTATION ELECTRIFICATION IN THE SOUTHEAST

Alabama

Alabama Electric Vehicle Indicators through December 2022



EMPLOYMENT

#5 in the Southeast per capita

- 1,858 jobs
- 174% growth in 2022



INVESTMENT

#5 in the Southeast per capita

- \$2.6 billion
- 157% growth in 2022



SALES

#6 in the Southeast in market share

- 10,679 cumulative sales
- 44% growth in 2022
- 2.1% of market share in Q4 2022



CHARGING DEPLOYMENT

#6 in the Southeast per capita

- Fast Chargers: 286 ports
- Level 2: 617 ports
- 33% growth in total ports in 2022



UTILITY INVESTMENT

- No approved investor-owned utility investment.



PUBLIC FUNDING

#5 in the Southeast per capita

- \$129.6 million approved funding
- \$26.58 public funding per capita

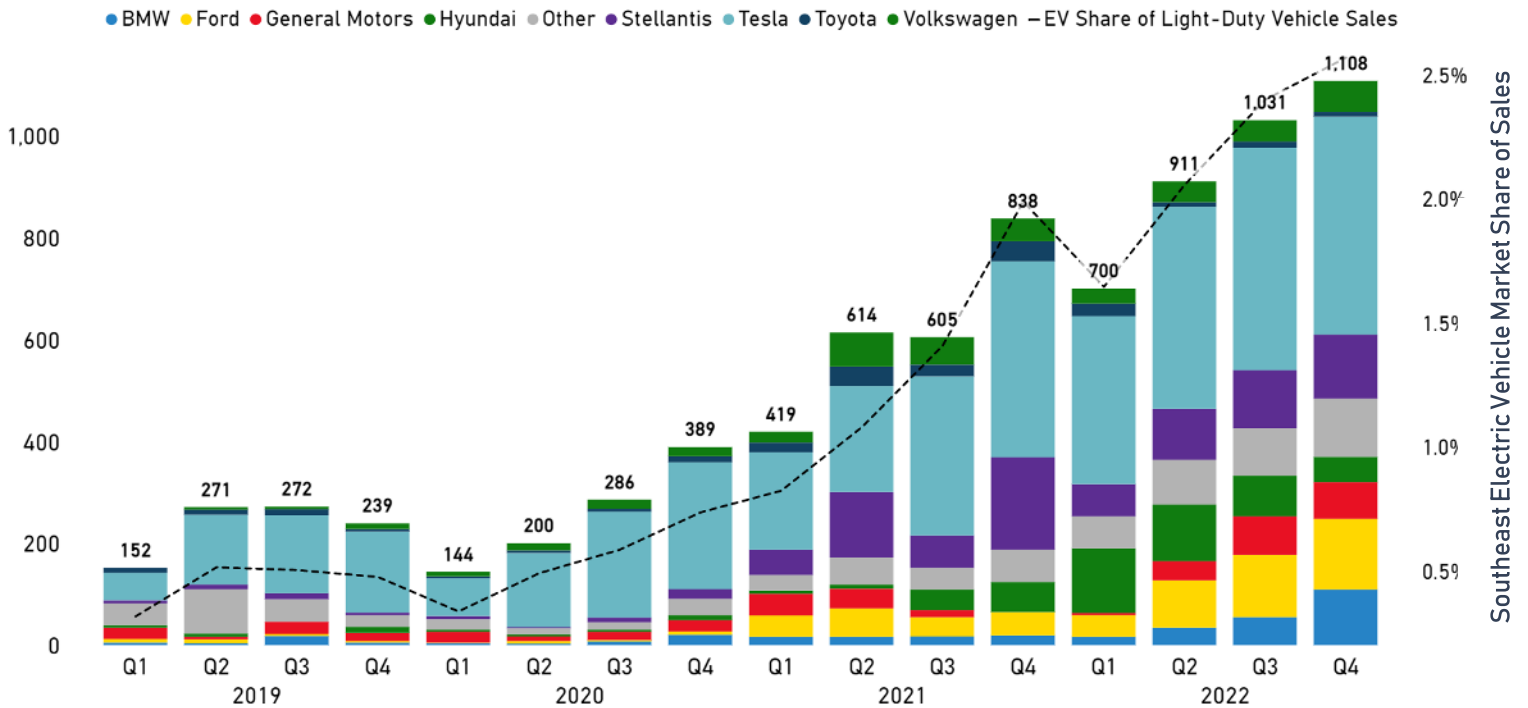
All measures include medium- and heavy-duty EVs, except for sales, which refer exclusively to passenger EVs. EV includes both battery EVs (BEV) and Plug-in Hybrid EVs (PHEV). Employment and Investment refer to announced EV manufacturing facilities including EV charging, EV assembly, battery manufacturing, and battery recycling facilities. Utility refers to investor-owned utilities only. Total is cumulative unless stated. Data is through December 2022 and growth is taken from January 1 to December 31, 2022. To understand EV Sales and charging deployment in a national context, please [read our report](#). Source: Atlas EV Hub

Highlights from July 2022 through December 2022

- Anovion Battery Materials announced plans to build a manufacturing plant in Colbert County to produce synthetic graphite anode material for lithium-ion batteries.
- Alabama will receive \$20.5 million from the Bipartisan Infrastructure Law's 2022 Clean School Bus Rebate awards to purchase 52 electric school buses.

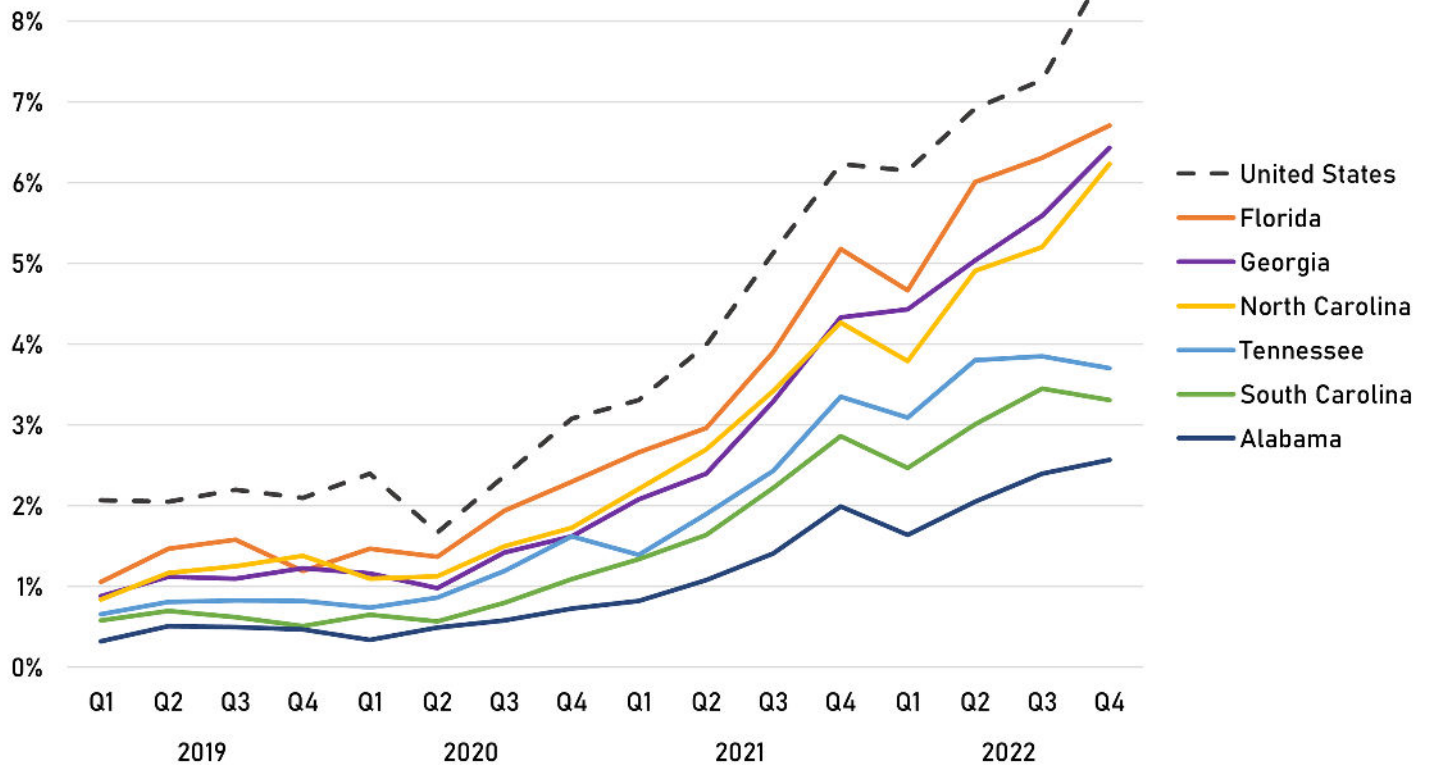


Alabama EV Sales and Market Share of Sales



Source: Atlas EV Hub

Southeast EV Light-Duty Sales Market Share



Source: Atlas EV Hub

